

GADD Uploader

How to upload data from MS Excel

Table of Content

1.	Introduction.....	3
2.	Upload MS Excel File.....	3
2.1.	Start GADD Uploader.....	3
2.2.	Select Excel File.....	4
2.3.	Settings.....	4
2.4.	Upload.....	5
2.4.1.	Result in SQL Server.....	6

1. Introduction

GADD Uploader is used to load data into GADD Data Storage. Uploader supports the ETL (Extract Transform-Load) and data loaded into GADD Data Storage can be transformed regarding e.g. change of data type, data wash and calculations according to business rules. GADD Uploader can be scheduled to automate upload of data and data exchange.

GADD Uploader is used for:

- ✓ Upload data from MS Excel file.
- ✓ Consolidate existing data in GADD Data Storage with e.g. campaign data in an MS Excel file.
- ✓ Upload data from other data bases e.g. data warehouse, sales system or other type of systems.

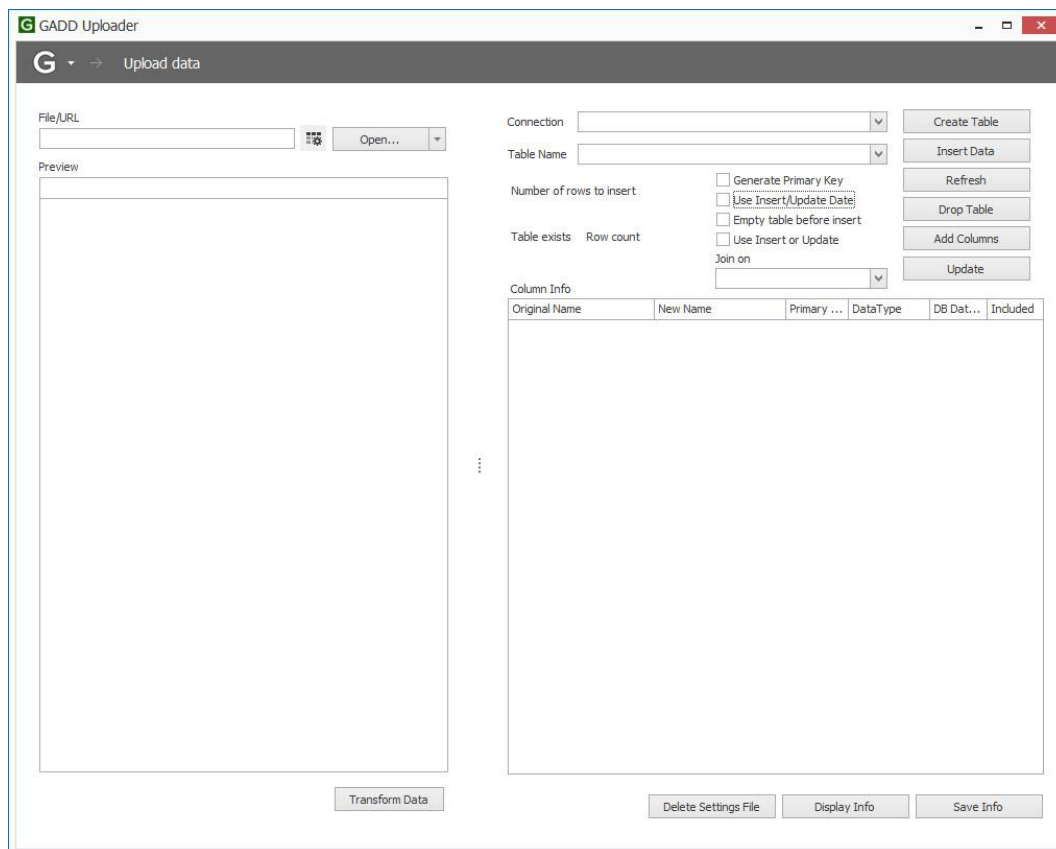
This document includes an introduction to how to use GADD Uploader focusing on uploading data from MS Excel file.

2. Upload MS Excel File

Follow the instruction below to upload data from an Excel file.

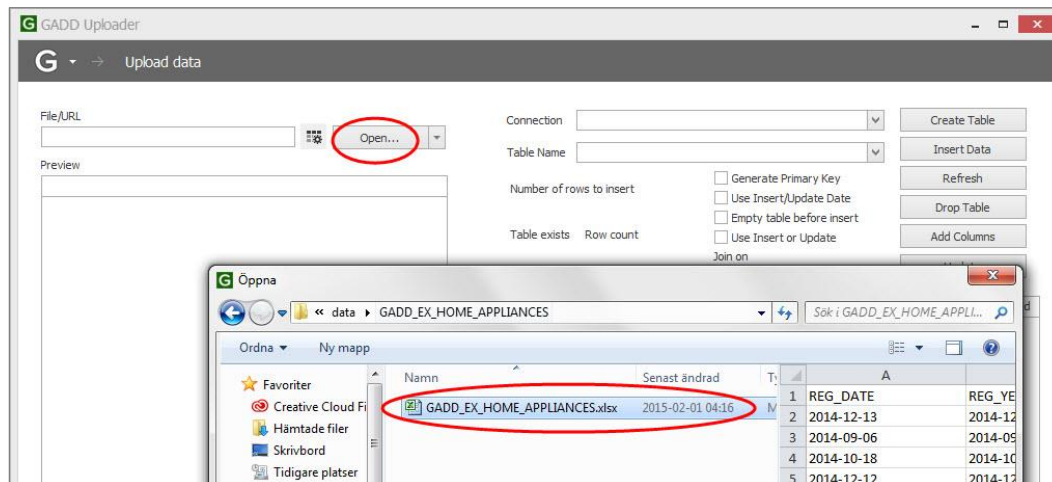
2.1. Start GADD Uploader

Double click on the GADD Uploader application icon to start GADD Uploader.



2.2. Select Excel File

Select the MS Excel file you want to upload by clicking on the “Open” button.



2.3. Settings

Before creating a new table in your database you have the possibility to do some settings, e.g.:

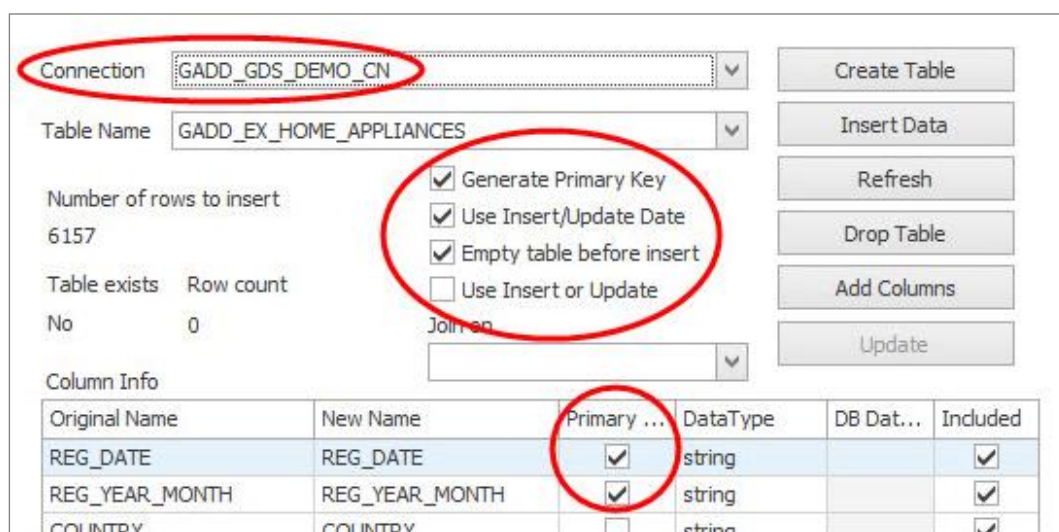
Connection – Select the correct connection to the database where the data is going to be uploaded.

Generate Primary Key – Check “Generate Primary Key” to avoid duplicates. Specify which columns that are Primary Key by clicking in the check boxes in Column Info.

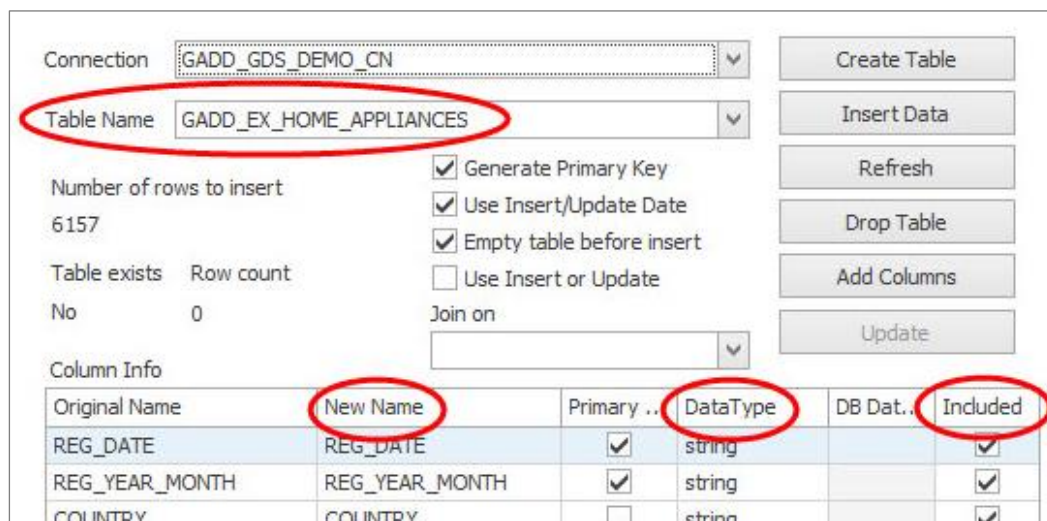
Use Insert/Update Date – Check “Use Insert/Update Date” if data already uploaded in the database should be updated.

Empty Table before insert – Check “Empty Table before insert” if the existing data in the database should be cleared before new data is uploaded.

Use Insert or Update – Insert will be used if the data, defined by the primary key, does not exist. The data will be updated if the data already exists.



You also have the possibility to change “Table Name” and “Column names”, change “Data Type” and exclude rows.



2.4. Upload

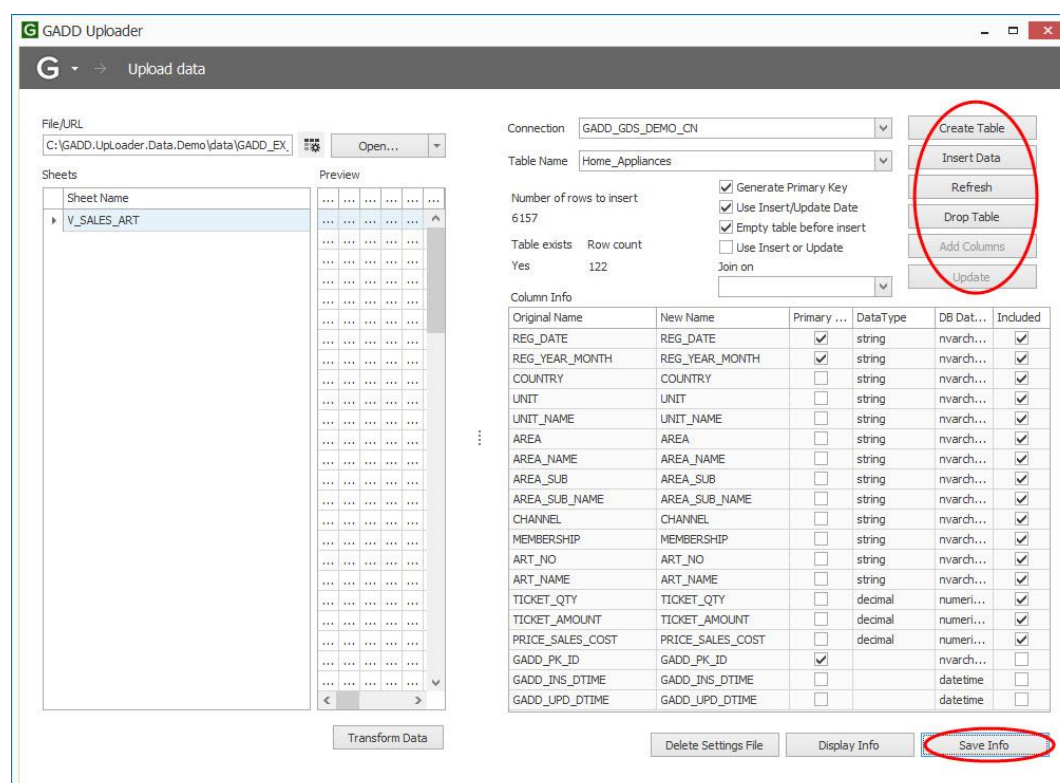
When you have done all necessary settings the next step is to create a table in your database. There are also other options available for e.g. to insert data in an existing table and drop (delete) a table.

Create Table – Click to create a new table in your database.

Insert Data – Click to upload.

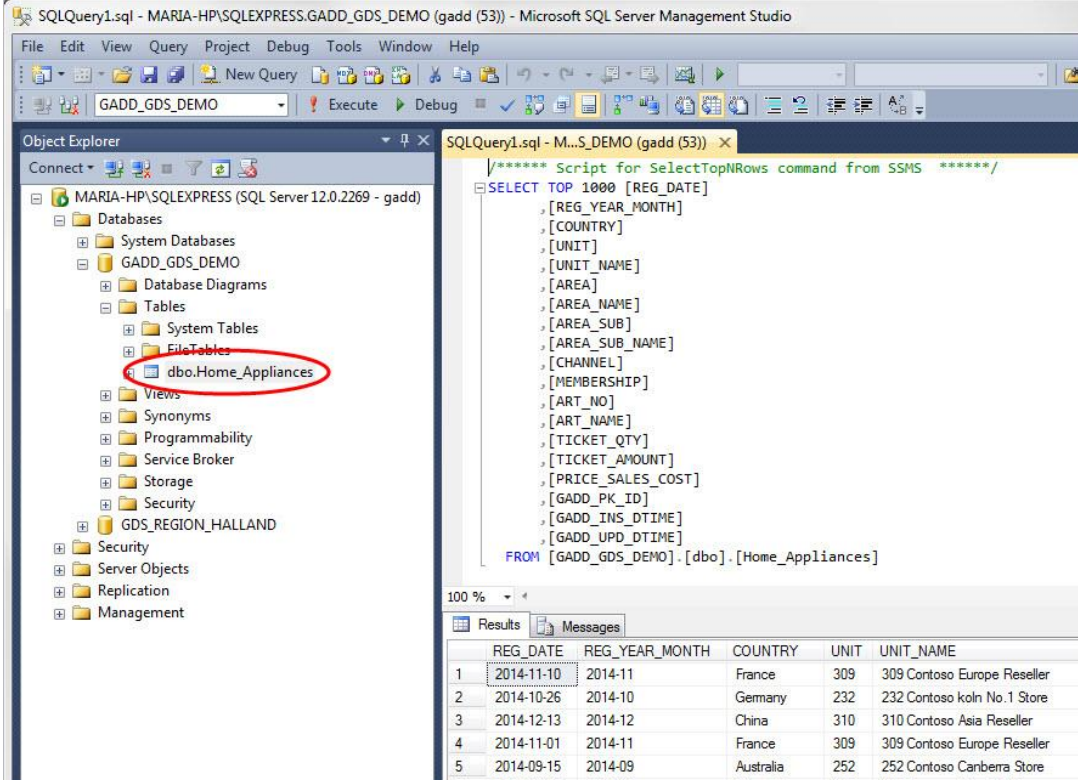
Drop Table – Use this option if you wish to delete the uploaded table.

Click on Save Info when your data has been successfully uploaded.



2.4.1. Result in SQL Server

Below is a picture where you can see the table in SQL Server that was uploaded via GADD Uploader.



The screenshot shows the Microsoft SQL Server Management Studio interface. The Object Explorer on the left shows the database structure for 'GADD_GDS_DEMO', with the table 'dbo.Home_Appliances' circled in red. The main window displays a SQL query using the 'SELECT TOP 1000' command to retrieve data from the 'Home_Appliances' table. The results pane at the bottom shows a table with the following data:

	REG_DATE	REG_YEAR_MONTH	COUNTRY	UNIT	UNIT_NAME
1	2014-11-10	2014-11	France	309	309 Contoso Europe Reseller
2	2014-10-26	2014-10	Germany	232	232 Contoso koln No.1 Store
3	2014-12-13	2014-12	China	310	310 Contoso Asia Reseller
4	2014-11-01	2014-11	France	309	309 Contoso Europe Reseller
5	2014-09-15	2014-09	Australia	252	252 Contoso Canberra Store
6	2014-11-15	2014-11	United States	158	158 Contoso Houndell Store